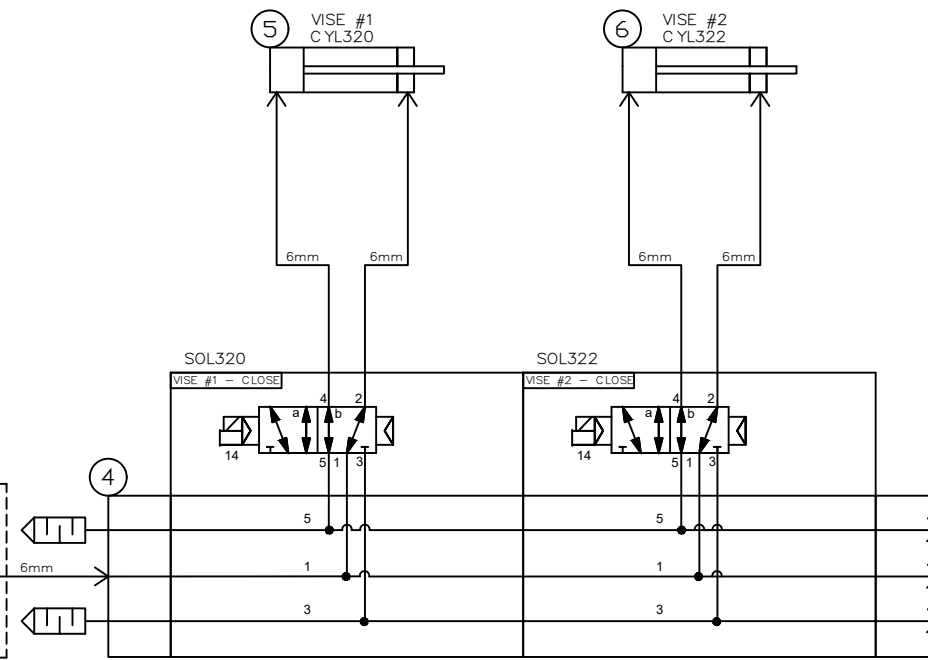


**BILL OF MATERIALS**

ITEM	QTY	DESCRIPTION	MANUF.	PART NUMBER
1	2	BUTTONMATE ASSEMBLY	READY ROBOTICS	R-100103
2				
3	1	GRIPPER ASSEMBLY	READY ROBOTICS	R-101213
4	1	MANIFOLD ASSEMBLY	READY ROBOTICS	R-101219
5	1	WISE ASSEMBLY	READY ROBOTICS	R-101226
6	1	WISE ASSEMBLY	READY ROBOTICS	R-101231



G:\Shared drives\Team - integrations\11 - Internal Projects\M20iA ACE Mill\R-101229-P01\R-101229-P01-01.dwg, Model, 7/14/2020 12:51:46 PM, T.Hayden

REV. LTR.	REVISION DESCRIPTION	DRAWN BY	DATE	APPROVED BY

TOLERANCES UNLESS OTHERWISE SPECIFIED	
INCHES	MILLIMETERS
.X DIM'S ±.02	X DIM'S ±0.5
.XX DIM'S ±.01	XX DIM'S ±0.3
.XXX DIM'S ±.005	XXX DIM'S ±0.13
FRACTIONS ±1/64"	ANGULAR DIM'S ±1°
FLATNESS & PERPENDICULARITY .001" OVER 6", .002" OVER 12", .005" 12" AND OVER	

PARTS MUST BE:  
 RoHS COMPLIANT AND LEAD FREE  
 NO ROLL FORM THREADS.  
 SURFACE FINISH: 63/  
 BREAK ALL SHARP EDGES .015 MAX.  
 DIMENSIONS APPLY AFTER PLATING  
 UNLESS OTHERWISE NOTED.

NOTE: UNTOLERANCED DIMENSIONS REFERENCING TRUE POSITIONS ARE BASIC

PROPRIETARY AND CONFIDENTIAL:  
 THE INFORMATION CONTAINED IN THIS DRAWING IS THE SOLE PROPERTY OF READY ROBOTICS. ANY REPRODUCTION IN PART OR AS A WHOLE WITHOUT THE WRITTEN PERMISSION OF READY ROBOTICS IS PROHIBITED.

PARTS MUST BE FREE OF IRREGULARITIES PRIOR TO ANY SURFACE FINISH

MATERIAL

FINISH

JOB NUMBER: R-101229	
APPROVALS	DATE
T. HAYDEN	14-JUL-2020
CHECKED	
APPROVED	
ISSUED	

TITLE SHEET			
TURN-KEY MILL TENDING			
M-20iA & ACE			
CUSTOMER:			
SIZE	DO NOT SCALE DRAWING	DWG. NO.	REV.
B	N/A	R-101229-P01	-
SCALE	REF	SHEET	OF
		01	01

